

GES-M175 GES-M180

GES-M150 GES-M160 GES-M165 GES-M170

Monocrystalline Photovoltaic Module

Features

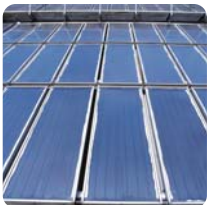
- High module efficiency and stable power output based on leading process technology
- Outstanding electrical performance under high-temperature conditions or low-irradiance conditions
- Ease of installation and all-weather applications due to the innovative engineering design

Applications

- On-grid utility systems
- On-grid commercial systems
- Off-grid residential systems

Quality and Warranty

- Peak power of single module is guaranteed in (0, +5)W power tolerance
- Rigorous quality control meets the highest international standard
- Product quality and liability are insured
- 5 years limited warranty on material and workmanship
- 12 years and 25 years limited warranty for minimum power output

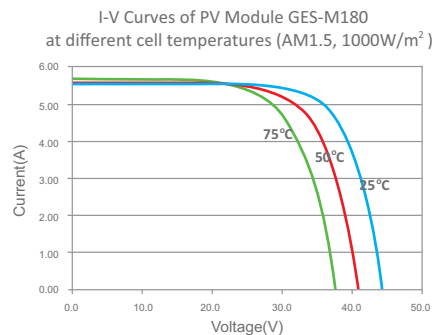
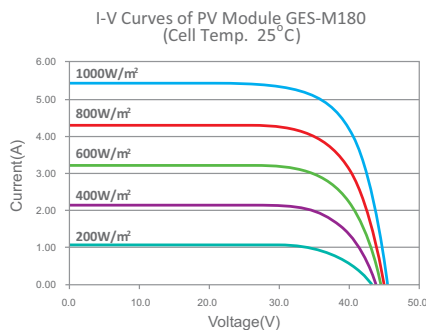


ELECTRICAL CHARACTERISTICS

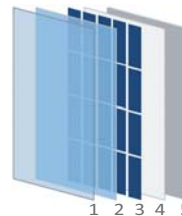
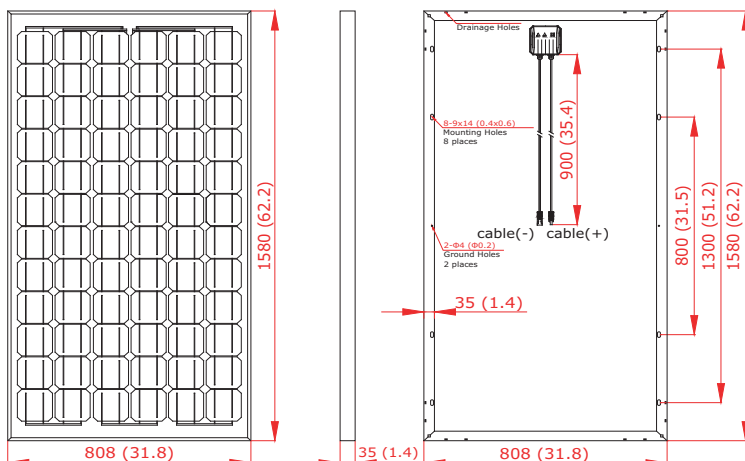
Module Type	Unit	GES-M150	GES-M160	GES-M165	GES-M170	GES-M175	GES-M180	
Maximum Power (Pmax)	W	150	160	165	170	175	180	
Power Tolerance	W	(0, +5)	(0, +5)	(0, +5)	(0, +5)	(0, +5)	(0, +5)	
Open Circuit Voltage (Voc)	V	43.2	43.6	43.8	44.0	44.2	44.4	
Short Circuit Current (Isc)	A	4.95	5.05	5.10	5.15	5.25	5.35	
Maximum Power Voltage (Vmp)	V	34.2	34.6	34.8	35.0	35.2	35.4	
Maximum Power Current (Imp)	A	4.39	4.62	4.74	4.86	4.97	5.08	
Module Efficiency (η_m)	%	11.7	12.5	12.9	13.3	13.7	14.1	
Cell Technology	125mm x 125mm Monocrystalline Silicon; 72pcs (6x12)							
Pmax Temperature Coefficient	%/°C						-0.48	
Voc Temperature Coefficient	%/°C						-0.35	
Isc Temperature Coefficient	%/°C						+0.04	
Maximum System Voltage	VDC						1000	
Maximum Series Fuse Rating	A						8	
Operating Temperature	°C						-40 ~ +85	
NOCT	°C						45±2	

STC: 1000W/m², AM1.5 and 25°C cell temperature; NOCT: Nominal Operating Cell Temperature

I-V CURVES



PHYSICAL CHARACTERISTICS Unit: mm(inch)



1. Tempered Glass
2. EVA (Ethylene Vinyl Acetate)
3. Solar Cells
4. EVA (Ethylene Vinyl Acetate)
5. Backsheet

Dimension	1580 x 808 x 35** mm (62.2 x 31.8 x 1.4 inch)
Weight	16 kg (35.3 lbs.)
Cable Length	900 mm (35.4 inch)
Bypass Diodes	3 pcs
Junction Box	IP65 rated
Front Glass	3.2 mm (0.1 inch) tempered low-iron glass
Frame	Anodized aluminum alloy

*Specifications are subjected to change without further notice
**42mm and 50mm thickness aluminum frame are optional